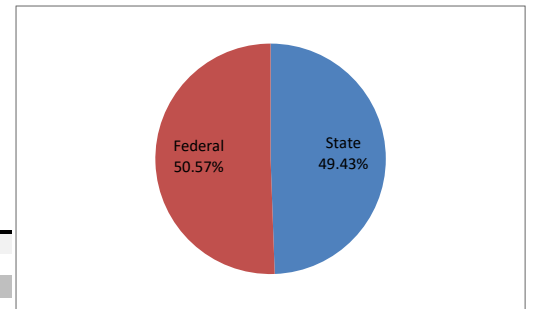
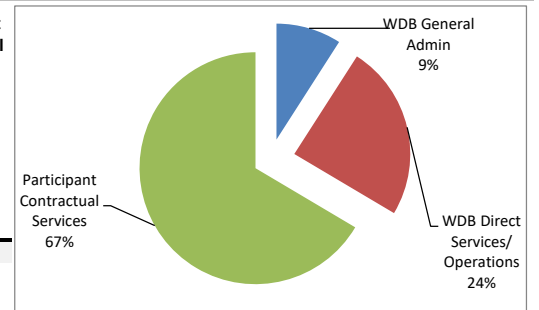


## FY 2021 CTDOL Contractual Grant Awards to Workforce Development Boards (WDB's)

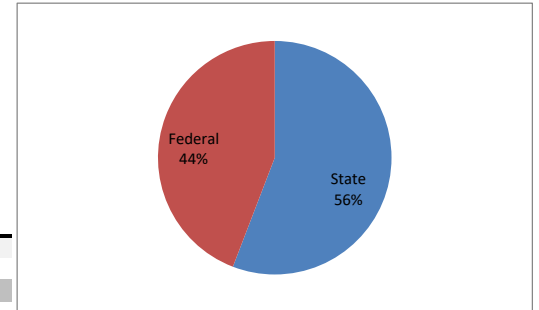
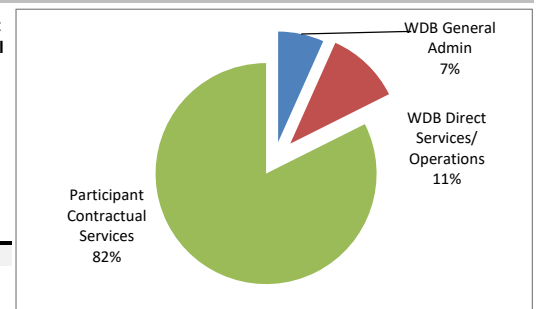
### Capital Workforce Partners

Program Name	WDB General Admin Budget	WDB Direct Services/ Operations Budget	Participant Contractual Services	Total Grant Award	WDB General Admin	WDB Direct Services/ Operations	Participant Contractual Services
<b>Federal Funding</b>							
WIOA	684,946	2,208,754	3,995,403	6,889,103	10%	32%	58%
Covid 19 Disaster Recovery Dislocated Worker Grant	43,511	23,253	368,187	434,951	10%	5%	85%
National Health Emergency Dislocated Worker Grant (Opioid) (53%)	23,142	35,851	173,629	232,623	10%	15%	75%
	-	-	-	-	-	-	-
	-	-	-	-	-	-	-
<b>Subtotal Federal Funding</b>	<b>751,599</b>	<b>2,267,858</b>	<b>4,537,219</b>	<b>7,556,677</b>	<b>10%</b>	<b>30%</b>	<b>60%</b>
<b>State Funding</b>							
Jobs First Employment Services (JFES)	386,303	1,094,141	2,735,861	4,216,305	9%	26%	65%
CT Youth Employment	68,250	-	1,365,000	1,433,250	5%	0%	95%
DCF Youth	7,949	-	158,972	166,921	5%	0%	95%
Jobs Funnel	5,382	44,455	4,000	53,837	10%	83%	7%
Second Chance Initiatives	29,604	166,410	100,000	296,014	10%	56%	34%
Non-Custodial Parent Pilot Program	26,762	-	250,828	277,590	10%	0%	90%
Apprenticeship Connecticut Initiative (ACI) 25%	49,526	56,261	444,213	550,000	9%	10%	81%
Opportunities for Long Term Unemployed	-	-	-	-	-	-	-
Governor's Summer Youth Employment Initiative Cares Act 2020	31,699	22,173	338,128	392,000	8%	6%	86%
Manufacturing Pipeline Initiative	-	-	-	-	-	-	-
<b>Subtotal State Funding</b>	<b>605,475</b>	<b>1,383,440</b>	<b>5,397,002</b>	<b>7,385,917</b>	<b>8%</b>	<b>19%</b>	<b>73%</b>
<b>Total Federal &amp; State Programs</b>	<b>1,357,075</b>	<b>3,651,298</b>	<b>9,934,221</b>	<b>14,942,594</b>	<b>9%</b>	<b>24%</b>	<b>66%</b>



### Eastern WDB

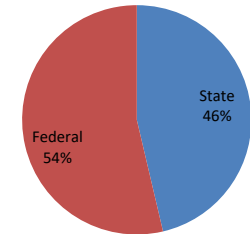
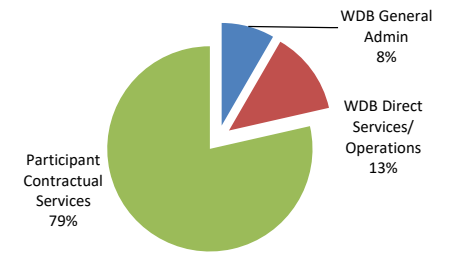
Program Name	WDB General Admin Budget	WDB Direct Services/ Operations Budget	Participant Contractual Services	Total Grant Award	WDB General Admin	WDB Direct Services/ Operations	Participant Contractual Services
<b>Federal Funding</b>							
WIOA	224,063	323,876	2,579,736	3,127,675	7%	10%	82%
Covid 19 Disaster Recovery Dislocated Worker Grant	34,229	-	414,024	448,253	8%	0%	92%
National Health Emergency Dislocated Worker Grant (Opioid) (53%)	7,833	24,254	77,812	109,899	7%	22%	71%
	-	-	-	-	-	-	-
	-	-	-	-	-	-	-
<b>Subtotal Federal Funding</b>	<b>266,125</b>	<b>348,130</b>	<b>3,071,572</b>	<b>3,685,827</b>	<b>7%</b>	<b>9%</b>	<b>83%</b>
<b>State Funding</b>							
Jobs First Employment Services (JFES)	78,570	212,355	809,077	1,100,002	7%	19%	74%
CT Youth Employment	-	-	441,000	441,000	0%	0%	100%
DCF Youth	-	-	163,796	163,796	0%	0%	100%
Jobs Funnel	-	-	-	-	-	-	-
Second Chance Initiatives	-	-	-	-	-	-	-
Non-Custodial Parent Pilot Program	-	-	-	-	-	-	-
Apprenticeship Connecticut Initiative (ACI) 25%	53,223	106,708.25	590,069	750,000	7%	14%	79%
Opportunities for Long Term Unemployed	-	-	-	-	-	-	-
Governor's Summer Youth Employment Initiative Cares Act 2020	28,079	-	363,921	392,000	7%	0%	93%
Manufacturing Pipeline Initiative	132,606	243,910	1,436,843	1,813,359	54%	17%	79%
<b>Subtotal State Funding</b>	<b>292,478</b>	<b>562,973</b>	<b>3,804,706</b>	<b>4,660,157</b>	<b>6%</b>	<b>12%</b>	<b>82%</b>
<b>Total Federal &amp; State Programs</b>	<b>558,603</b>	<b>911,103</b>	<b>6,876,278</b>	<b>8,345,984</b>	<b>7%</b>	<b>11%</b>	<b>82%</b>



## FY 2021 CTDOL Contractual Grant Awards to Workforce Development Boards (WDB's)

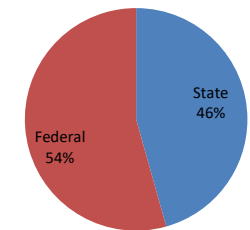
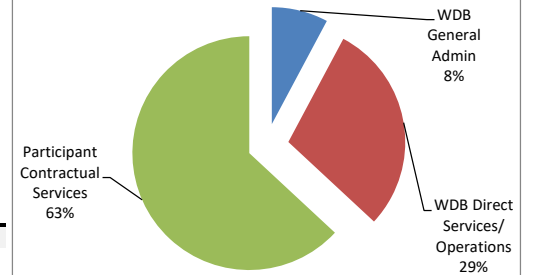
### Northwest WDB

Program Name	WDB General Admin Budget	WDB Direct Services/ Operations Budget	Participant Contractual Services	Total Grant Award	WDB General Admin	WDB Direct Services/ Operations	Participant Contractual Services
<b>Federal Funding</b>							
WIOA	395,102	759,283	2,796,643	3,951,028	10%	19%	71%
Covid 19 Disaster Recovery Dislocated Worker Grant	32,555	19,819	382,577	434,951	7%	5%	88%
National Health Emergency Dislocated Worker Grant (Opioid) (53%)	3,016	17,755	111,152	131,923	2%	13%	84%
	-	-	-	-	-	-	-
	-	-	-	-	-	-	-
<b>Subtotal Federal Funding</b>	<b>430,673</b>	<b>796,857</b>	<b>3,290,372</b>	<b>4,517,902</b>	<b>10%</b>	<b>18%</b>	<b>73%</b>
<b>State Funding</b>							
Jobs First Employment Services (JFES)	159,510	227,322	1,208,265	1,595,097	10%	14%	76%
CT Youth Employment	49,612	-	942,638	992,250	5%	0%	95%
DCF Youth	3,919	18,667	55,794	78,380	5%	24%	71%
Jobs Funnel	688	19,500	33,650	53,838	1%	36%	63%
Second Chance Initiatives	-	-	-	-	-	-	-
Non-Custodial Parent Pilot Program	-	-	-	-	-	-	-
Apprenticeship Connecticut Initiative (ACI) 25%	38,787	39,963.00	708,750	787,500	5%	5%	90%
Opportunities for Long Term Unemployed	-	-	-	-	-	-	-
Governor's Summer Youth Employment Initiative Cares Act 2020	19,600	-	372,400	392,000	5%	0%	95%
Manufacturing Pipeline Initiative	-	-	-	-	-	-	-
Mortgage Crisis	-	-	-	-	-	-	-
<b>Subtotal State Funding</b>	<b>272,116</b>	<b>305,452</b>	<b>3,321,497</b>	<b>3,899,065</b>	<b>7%</b>	<b>8%</b>	<b>85%</b>
<b>Total Federal &amp; State Programs</b>	<b>702,789</b>	<b>1,102,309</b>	<b>6,611,869</b>	<b>8,416,967</b>	<b>8%</b>	<b>13%</b>	<b>79%</b>



### Workforce Alliance

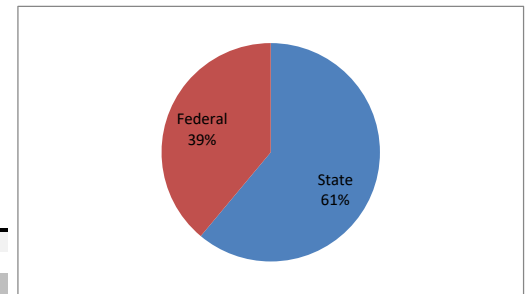
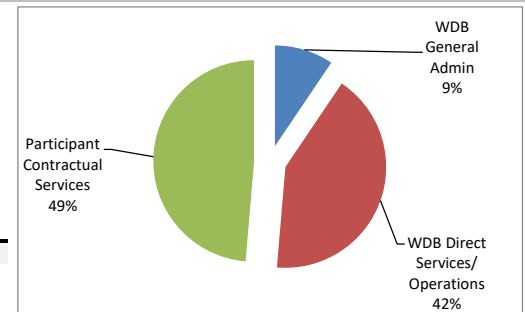
Program Name	WDB General Admin Budget	WDB Direct Services/ Operations Budget	Participant Contractual Services	Total Grant Award	WDB General Admin	WDB Direct Services/ Operations	Participant Contractual Services
<b>Federal Funding</b>							
WIOA	398,428	2,122,997	2,625,184	5,146,609	8%	41%	51%
Covid 19 Disaster Recovery Dislocated Worker Grant	32,555	21,619	380,777	434,951	7%	5%	88%
National Health Emergency Dislocated Worker Grant (Opioid) (53%)	7,038	85,212	18,472	110,723	6%	77%	17%
	-	-	-	-	-	-	-
	-	-	-	-	-	-	-
<b>Subtotal Federal Funding</b>	<b>438,021</b>	<b>2,229,828</b>	<b>3,024,433</b>	<b>5,692,283</b>	<b>8%</b>	<b>39%</b>	<b>53%</b>
<b>State Funding</b>							
Jobs First Employment Services (JFES)	216,024	622,567	1,593,136	2,431,727	9%	26%	66%
CT Youth Employment	49,613	35,737	906,900	992,250	5%	4%	91%
DCF Youth	5,001	8,973	86,049	100,023	5%	9%	86%
Jobs Funnel	-	-	-	-	-	-	-
Second Chance Initiatives	-	-	-	-	-	-	-
Non-Custodial Parent Pilot Program	-	-	-	-	-	-	-
Apprenticeship Connecticut Initiative (ACI) 25%	75,556	151,582	635,363	862,500	9%	18%	74%
Opportunities for Long Term Unemployed	-	-	-	-	-	-	-
Governor's Summer Youth Employment Initiative Cares Act 2020	32,379	-	359,621	392,000	8%	0%	92%
Manufacturing Pipeline Initiative	-	-	-	-	-	-	-
Mortgage Crisis	-	-	-	-	-	-	-
<b>Subtotal State Funding</b>	<b>378,573</b>	<b>818,859</b>	<b>3,581,069</b>	<b>4,778,500</b>	<b>8%</b>	<b>17%</b>	<b>75%</b>
<b>Total Federal &amp; State Programs</b>	<b>816,594</b>	<b>3,048,687</b>	<b>6,605,502</b>	<b>10,470,783</b>	<b>8%</b>	<b>29%</b>	<b>63%</b>



## FY 2021 CTDOL Contractual Grant Awards to Workforce Development Boards (WDB's)

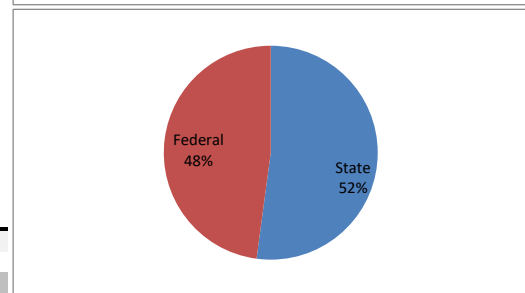
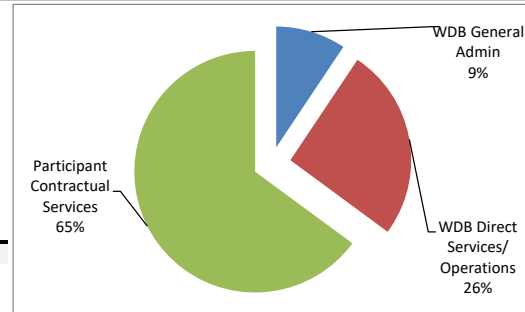
### The WorkPlace

Program Name	WDB General Admin Budget	WDB Direct Services/ Operations Budget	Participant Contractual Services	Total Grant Award	WDB General Admin	WDB Direct Services/ Operations	Participant Contractual Services
<b>Federal Funding</b>							
WIOA	487,599	2,002,405	2,416,238	4,906,242	10%	41%	49%
Covid 19 Disaster Recovery Dislocated Worker Grant	32,555	19,819	387,118	439,492	7%	5%	88%
National Health Emergency Dislocated Worker Grant (Opioid) (53%)	14,816	106,308	18,749	139,873	11%	76%	13%
	-	-	-	-	-	-	-
	-	-	-	-	-	-	-
	-	-	-	-	-	-	-
<b>Subtotal Federal Funding</b>	<b>534,970</b>	<b>2,128,532</b>	<b>2,822,105</b>	<b>5,485,607</b>	<b>10%</b>	<b>39%</b>	<b>51%</b>
<b>State Funding</b>							
Jobs First Employment Services (JFES)	148,077	344,132	1,054,874	1,547,083	10%	22%	68%
CT Youth Employment	27,562	67,167	456,521	551,250	5%	12%	83%
DCF Youth	6,419	1,895	120,066	128,380	5%	1%	94%
Jobs Funnel	-	-	-	-	-	-	-
Second Chance Initiatives	-	-	-	-	-	-	-
Non-Custodial Parent Pilot Program	-	-	-	-	-	-	-
Apprenticeship Connecticut Initiative (ACI) 25%	219,970	1,301,030	679,000	2,200,000	10%	59%	31%
Opportunities for Long Term Unemployed	286,513	1,778,878	819,817	2,885,208	10%	62%	28%
Governor's Summer Youth Employment Initiative Cares Act 2020	19,600	14,016	358,384	392,000	5%	4%	91%
Manufacturing Pipeline Initiative	-	-	-	-	-	-	-
Mortgage Crisis	88,105	268,595	545,800	902,500	10%	30%	60%
<b>Subtotal State Funding</b>	<b>796,246</b>	<b>3,775,713</b>	<b>4,034,462</b>	<b>8,606,421</b>	<b>9%</b>	<b>44%</b>	<b>47%</b>
<b>Total Federal &amp; State Programs</b>	<b>1,331,216</b>	<b>5,904,245</b>	<b>6,856,567</b>	<b>14,092,028</b>	<b>9%</b>	<b>42%</b>	<b>49%</b>



### Grand Total all WDB's

Program Name	WDB General Admin Budget	WDB Direct Services/ Operations Budget	Participant Contractual Services	Total Grant Award	WDB General Admin	WDB Direct Services/ Operations	Participant Contractual Services
<b>Federal Funding</b>							
WIOA	2,190,138	7,417,315	14,413,204	24,020,657	9%	31%	60%
Covid 19 Disaster Recovery Dislocated Worker Grant	175,405	84,510	1,932,683	2,192,598	8%	4%	88%
National Health Emergency Dislocated Worker Grant (Opioid) (53%)	55,846	269,380	399,813	725,040	8%	37%	55%
	-	-	-	-	-	-	-
	-	-	-	-	-	-	-
	-	-	-	-	-	-	-
<b>Subtotal Federal Funding</b>	<b>2,421,389</b>	<b>7,771,205</b>	<b>16,745,700</b>	<b>26,938,295</b>	<b>9%</b>	<b>29%</b>	<b>62%</b>
<b>State Funding</b>							
Jobs First Employment Services (JFES)	988,484	2,500,517	7,401,213	10,890,214	9%	23%	68%
CT Youth Employment	195,037	102,904	4,112,059	4,410,000	4%	2%	93%
DCF Youth	23,288	29,535	584,677	637,500	4%	5%	92%
Jobs Funnel	6,070	63,955	37,650	107,675	6%	59%	35%
Second Chance Initiatives	29,604	166,410	100,000	296,014	10%	56%	34%
Non-Custodial Parent Pilot Program	26,762	-	250,828	277,590	10%	0%	90%
Apprenticeship Connecticut Initiative (ACI) 25%	437,062	1,655,544	3,057,395	5,150,000	8%	32%	59%
Opportunities for Long Term Unemployed	286,513	1,778,878	819,817	2,885,208	10%	62%	28%
Governor's Summer Youth Employment Initiative Cares Act 2020	131,357	36,189	1,792,454	1,960,000	7%	2%	91%
Manufacturing Pipeline Initiative	132,606	243,910	1,436,843	1,813,359	7%	13%	79%
Mortgage Crisis	88,105	268,595	545,800	902,500	10%	30%	60%
<b>Subtotal State Funding</b>	<b>2,344,888</b>	<b>6,846,437</b>	<b>20,138,736</b>	<b>29,330,060</b>	<b>8%</b>	<b>23%</b>	<b>69%</b>
<b>Total Federal &amp; State Programs</b>	<b>4,766,277</b>	<b>14,617,642</b>	<b>36,884,436</b>	<b>56,268,355</b>	<b>9%</b>	<b>26%</b>	<b>66%</b>



Notes: Data Source - FY 2021 budgeted amounts are taken directly from [original budget submissions](#) to CTDOL contracts by the WDB's.

1. WDB General Administration Budget includes direct and indirect administrative expenses such as fiscal, HR, general administration, etc.
2. WDB Direct Services/Operations Budget includes non-administrative expenses incurred at the WDB level for program management and program services, where allowable.
3. Participant Contractual Services are amounts budgeted for contractual services provided to program participants.